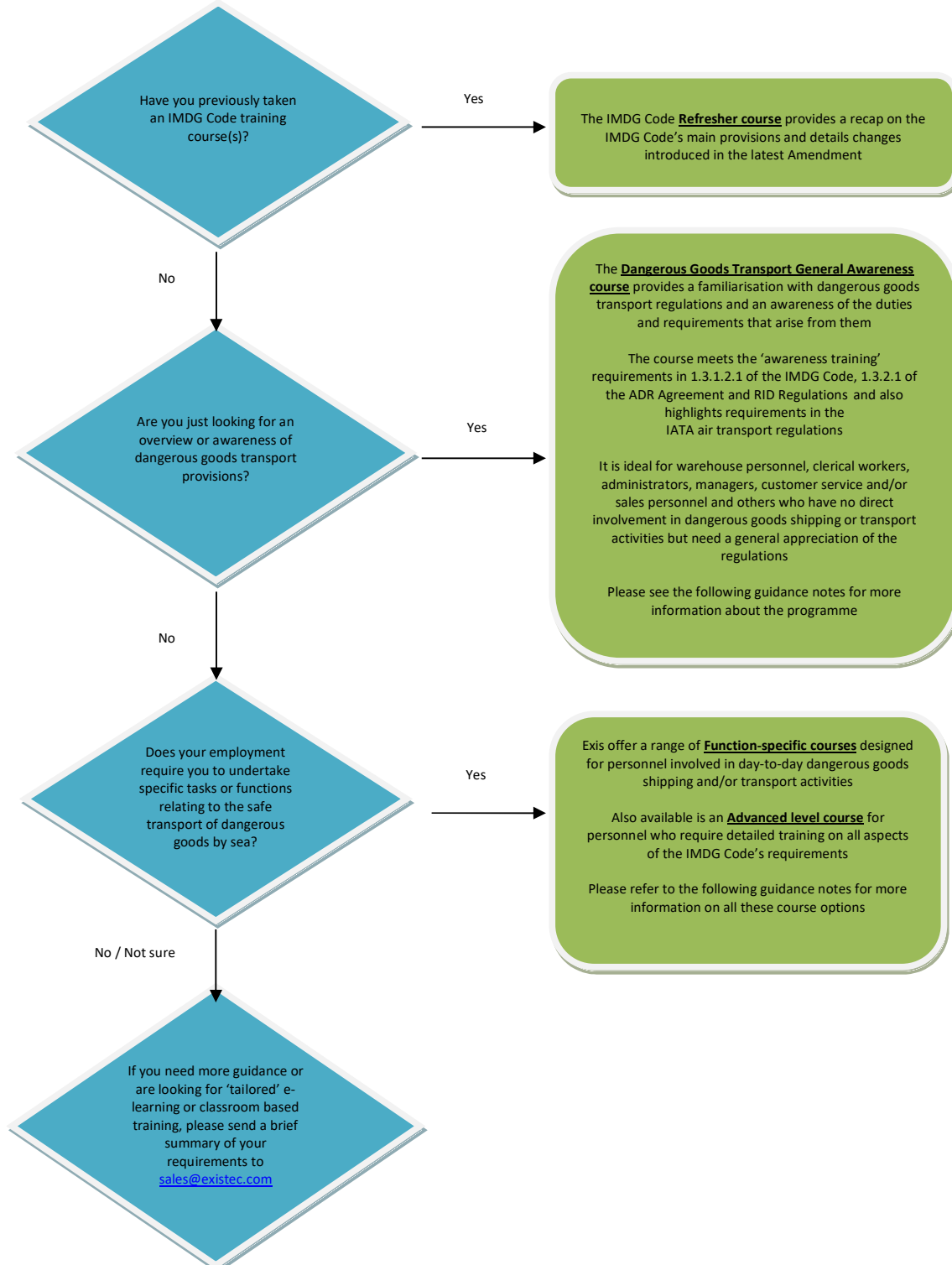


### Which IMDG course do I need?

The following guidance will hopefully answer your question – please contact us at [sales@existec.com](mailto:sales@existec.com) if you need further help or assistance.



### Guidance notes

The IMDG Code requires shore-based personnel engaged in the transport of dangerous goods by sea to be trained in accordance with the roles they perform.

All personnel must be familiar with the general provisions of the IMDG Code. Therefore training must cover:

- the different classes of dangerous goods;
- packing;
- marking, labelling and placarding;
- transport documentation;
- stowage and segregation; and
- emergency response procedures

Training must be provided at both an awareness level and, where required, at a hands-on function-specific level.

Any training provided must be periodically updated with refresher training. Training records must also be kept and be available to employees and competent authorities on request.

It is for the employer to determine who requires training, the appropriate level of training and how the training is provided.

Our range of courses is designed to meet these requirements.

---

### **Dangerous Goods Transport General Awareness training**

This course provides a familiarisation with dangerous goods transport regulations and an awareness of the duties and requirements that arise from them.

It is designed for personnel with no specific dangerous goods transport function(s) who need a general appreciation of the regulations.

The programme is split into the following sections:

- Course scope and objectives
- Dangerous goods transport legislation
- Classification and identification
- Consignment and transport procedures
- The journey rules – operational considerations
- Emergency response issues

There is an end-of-course test, the score for which is recorded and included on your course completion certificate.

### **Function-specific training**

We offer several function-specific courses which cover many of the job functions routinely associated with the transport of dangerous goods by sea. These are designed for personnel involved in day-to-day dangerous goods shipping and/or transport activities.

The following course configurations are available:

### Standard

This course is aimed at booking office staff, administrators, customer and/or business services support staff. It provides training at a function-specific level for these personnel and others with similar functions requiring a sound working knowledge of the IMDG Code. This course provides:

- An introduction to the IMDG Code
- An overview of the IMDG Code general provisions
- An overview of dangerous goods classification and identification provisions
- An overview on package marking and labelling requirements
- An overview of CTU marking and placarding requirements
- In-depth training on documentation requirements and completion procedures
- An overview of stowage requirements
- An overview of segregation requirements
- An overview of the requirements for limited quantities and excepted quantities shipments
- An overview of additional provisions concerning transport, including emergency response provisions

### Consignor/ Freight forwarder

This course is for personnel with a management, supervisory and/or safety compliance role for a company involved in dangerous goods consignment operations e.g. shipper or freight forwarder. This course provides:

- An introduction to the IMDG Code
- An overview of the IMDG Code general provisions
- In-depth training on dangerous goods classification and identification provisions
- In-depth training on packing provisions
- In-depth training on package marking and labelling requirements
- In-depth training on CTU marking and placarding requirements
- In-depth training on documentation requirements and completion procedures
- An overview of stowage requirements
- In-depth training on segregation requirements within a CTU
- In-depth training on the requirements for limited quantities and excepted quantities shipments
- Training on the use of CTUs
- An overview of additional provisions concerning transport, including emergency response provisions

### Packer / Cargo handler

This course is aimed at personnel who pack/mark/label dangerous goods and/or load/unload cargo transport units. This course provides:

- An introduction to the IMDG Code
- An overview of the IMDG Code general provisions
- An overview of dangerous goods classification and identification provisions
- An overview of packing requirements
- In-depth training on package marking and labelling requirements
- In-depth training on CTU marking and placarding requirements
- An overview of documentation requirements
- An overview of stowage requirements
- In-depth training on segregation requirements within a CTU
- An overview of the requirements for limited quantities and excepted quantities shipments
- Training on the use of CTUs

- An overview of additional provisions concerning transport including emergency response provisions

### **Ship loader**

This course is aimed at personnel responsible for and/or directly involved in ship loading/unloading operations. This course provides:

- An introduction to the IMDG Code
- An overview of the IMDG Code general provisions
- An overview of dangerous goods classification and identification provisions
- An overview of packing requirements
- An overview on package marking and labelling requirements
- In-depth training on CTU marking and placarding requirements
- An overview of documentation requirements
- In-depth training on stowage requirements
- In-depth training on segregation requirements within a CTU
- In-depth training on the segregation requirements for CTUs containing dangerous goods when loaded on vessels
- An overview of the requirements for limited quantities and excepted quantities shipments
- Training on incident and fire prevention in port and onboard ship
- An overview of additional provisions concerning transport including emergency response provisions

### **Ship operator**

This course is for personnel responsible for and/or directly involved in managing the operation of a vessel carrying dangerous goods. This course provides:

- An introduction to the IMDG Code
- An overview of the IMDG Code general provisions
- In-depth training on dangerous goods classification and identification provisions
- An overview of packing requirements
- An overview on package marking and labelling requirements
- In-depth training on CTU marking and placarding requirements
- In-depth training on documentation requirements and completion procedures
- In-depth training on stowage requirements
- In-depth training on segregation requirements within a CTU
- In-depth training on the segregation requirements for CTUs containing dangerous goods when loaded on vessels
- In-depth training on the requirements for limited quantities and excepted quantities shipments
- Training on incident and fire prevention and emergency response procedures in a port and on board a ship
- Training on the International Convention for Safe Containers
- Training on dangerous goods in port areas

### **Advanced course**

This course is aimed at senior dangerous goods manager / Dangerous goods safety adviser who require detailed training on all the main aspects of the IMDG Code's provisions. This course provides:

- An introduction to the IMDG Code
- An overview of the IMDG Code general provisions
- In-depth training on dangerous goods classification and identification provisions
- In-depth training on packing requirements

- In-depth training on package marking and labelling requirements
- In-depth training on CTU marking and placarding requirements
- In-depth training on documentation requirements and completion requirements
- In-depth training on stowage requirements
- In-depth training on segregation requirements within a CTU
- In-depth training on the segregation requirements for CTUs containing dangerous goods when loaded on vessels
- In-depth training on the requirements for limited quantities and excepted quantities shipments
- Training on the use of CTUs
- Training on incident and fire prevention and emergency response procedures in a port and on board a ship
- Training on the International Convention for Safe Containers
- Training on dangerous goods in port areas

**Refresher training (IMDG Code 1.3.1.1)**

This course provides a recap of the main IMDG Code provisions and includes an update on significant changes in the latest Amendment for personnel who have already been trained online or in the classroom and have previous knowledge of the IMDG Code's provisions.